
Thomas Lane, Olentangy River Road, North Broadway S.R. 315 and Exit Ramps at Olentangy River Road and North Broadway

Contact Information

Department of Development

Michelle Larsen
Economic Development Division
150 S. Front Street, Suite 220
Columbus, Ohio 43215
tel. (614) 645-5066
MElarsen@columbus.gov

Department of Public Service

Steven Schmidt
Division of Design and
Construction
50 W. Gay Street, 6th Floor
Columbus, Ohio 43215
tel. 614-645-3966
SMSchmidt@columbus.gov

Designer

Burgess and Niple, Inc.
Evans, Mechwart, Hambleton &
Tilton, Inc.

Project Description

This project consists of improvements to:

- Thomas Lane (from Olentangy River Road to west of Olentangy River Road)
- Olentangy River Road (from north of Thomas Lane to south of S.R. 315 exit ramps)
- North Broadway (from NB S.R. 315 exit ramp to east of S.R. 315)
- S.R. 315 and S.R. 315 Exit Ramps at Olentangy River Road and North Broadway

Generally, the improvements are located at the intersections of Olentangy River Road at North Broadway, Olentangy River Road at the northbound S.R. 315 exit ramps, Olentangy River Road at North Broadway, North Broadway at the S.R. 315 exit ramp (currently ramp 6A), North Broadway at the northbound entrance ramp and Thomas Lane at Olentangy River Road. Where these intersections are improved, the approach legs will be modified to accommodate changes in alignment and capacity. Improvements will include pavement reconstruction, widening, and resurfacing, new sidewalks, curb, storm sewers, street lighting replacement and upgrades, traffic signals, and median modifications. In addition to these improvements, the northbound S.R. 315 exit ramp to eastbound North Broadway (currently ramp 6C) will be removed.

The project will also construct a new S.R. 315 southbound exit ramp to West North Broadway, at the intersection with OhioHealth Boulevard. The new ramp will require a new bridge under S.R. 315. To accommodate the bridge construction, 6-lanes of temporary pavement will be constructed to maintain traffic on S.R. 315.

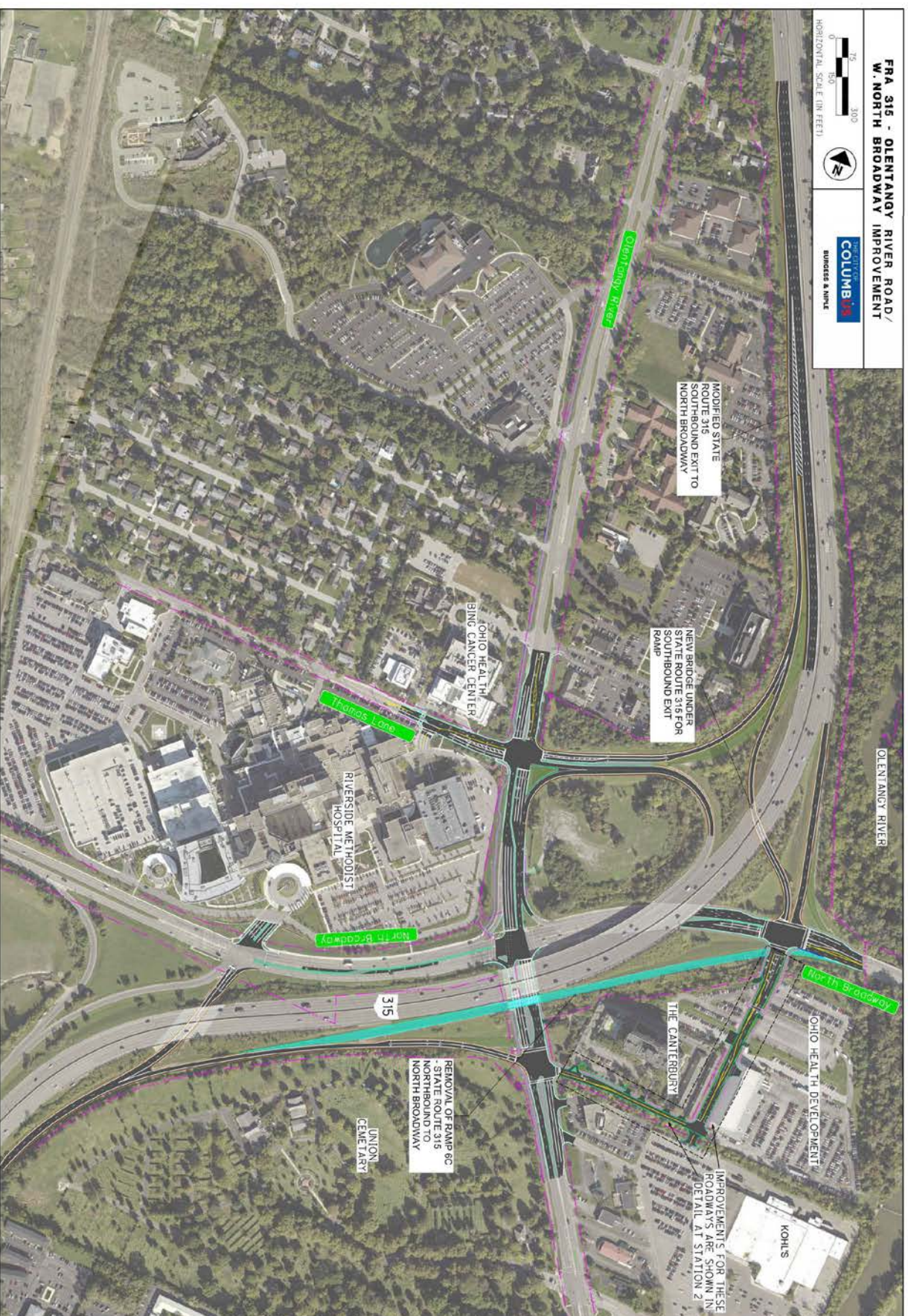
Schedule

The projects are in the initial stages of design. Construction is anticipated to begin in Fall 2018

Estimated Costs

Design \$3,000,000
Construction \$24,000,000

Thomas Lane, Olentangy River Road, North Broadway S.R. 315 and Exit Ramps at Olentangy River Road and North Broadway



Please send comments, questions
or concerns via mail or e-mail to:

Michelle Larsen
Economic Development Division
150 S. Front Street, Suite 220
Columbus, Ohio 43215
tel. (614) 645-5066 MLarsen@columbus.gov